

TR2 12-14-18

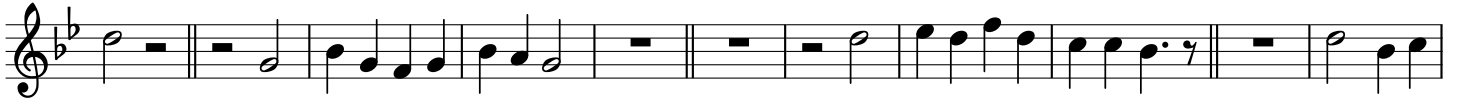
Soprano - Scale: F, G, Bb, C, D

Paul H. Muller

♩ = 116



12



23



TR2 12-14-18

Alto I - Scale: F, G, Bb, C, D

Paul H. Muller

♩ = 116



11



24



TR2 12-14-18

Alto 2 - Scale: F, G, Bb, C, D

Paul H. Muller

♩ = 116



8



16



27



32



TR2 12-14-18

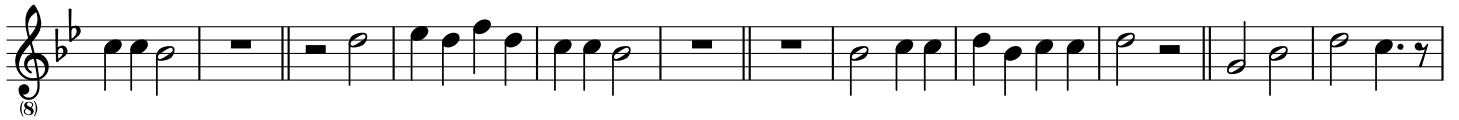
Tenor - Scale: F, G, Bb, C, D

Paul H. Muller

♩ = 116



11



23



31



TR2 12-14-18

Baritone/Bass - Scale: F, G, Bb, C, D

Paul H. Muller

♩ = 116



14



25

