

# March 23, 2018

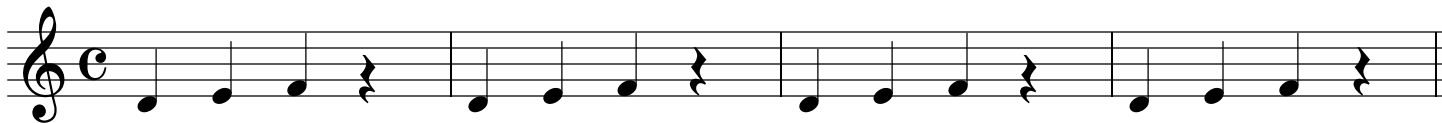
Create 24 Unique Cells - up to 4 bars in Length

Paul H. Muller

♩ = 120

Scale: D, E, F, G, A

Cell 1



Cell 2



Cell 3



Cell 4



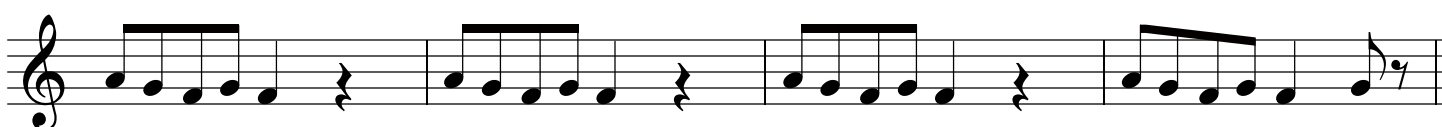
Cell 5



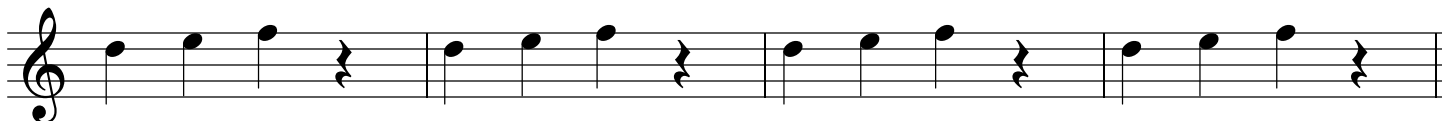
Cell 6



Cell 7



Cell 8



# March 23, 2018

Create 24 Unique Cells - up to 4 bars in Length

Paul H. Muller

♩ = 120

Pentatonic D Major Scale: D, E, F#, A, B

Cell 1

The musical score for Cell 1 consists of eight staves of music, all in the key of D major (one sharp) and common time (C). The tempo is marked as ♩ = 120. The scale used is the Pentatonic D Major Scale: D, E, F#, A, B. The staves contain the following patterns:

- Staff 1: A continuous eighth-note run: D4-E4-F#4-A4-B4, repeated four times.
- Staff 2: A rhythmic pattern of eighth notes and quarter notes: D4-E4, quarter rest, F#4-A4, quarter rest, B4, quarter rest, D5, quarter rest, repeated four times.
- Staff 3: A sixteenth-note run: D4-E4-F#4-A4-B4, repeated four times.
- Staff 4: A simple eighth-note scale: D4-E4-F#4-A4-B4, repeated four times.
- Staff 5: A sixteenth-note scale: D4-E4-F#4-A4-B4, repeated four times.
- Staff 6: A simple quarter-note scale: D4, E4, F#4, A4, B4, repeated four times.
- Staff 7: A sixteenth-note scale: D4-E4-F#4-A4-B4, repeated four times.
- Staff 8: A sixteenth-note scale: D4-E4-F#4-A4-B4, repeated four times.