

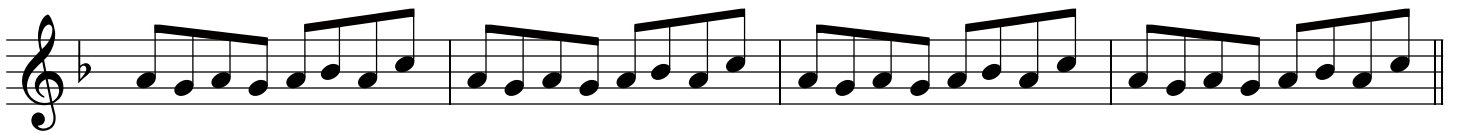
TR2 February 2, 2018

Create 24 Unique Cells - up to 4 bars in Length

Paul H. Muller

♩ = 120

Cell 1



Cell 9

The musical score for Cell 9 consists of eight staves of music, all in treble clef and one flat key signature. The first staff features four measures of whole notes. The second staff features four measures of quarter notes. The third staff features four measures of eighth notes. The fourth staff features four measures of sixteenth notes. The fifth staff features four measures of eighth notes. The sixth staff features four measures of quarter notes. The seventh staff features four measures of eighth notes. The eighth staff features four measures of sixteenth notes.

Cell 17

The musical score for Cell 17 consists of eight staves of music. The first staff begins with a treble clef and a B-flat key signature. The music is written in a single melodic line. The first staff contains four measures of music, ending with a double bar line. The second staff contains four measures of music, featuring eighth and sixteenth notes. The third staff contains four measures of music, featuring a complex rhythmic pattern of eighth and sixteenth notes. The fourth staff contains four measures of music, ending with a double bar line. The fifth staff contains four measures of music, featuring eighth and sixteenth notes. The sixth staff contains four measures of music, ending with a double bar line. The seventh staff contains four measures of music, featuring a complex rhythmic pattern of eighth and sixteenth notes. The eighth staff contains four measures of music, ending with a double bar line.