

# February 9, 2018

Create 24 Unique Cells - up to 4 bars in Length

Paul H. Muller

$\text{♩} = 120$

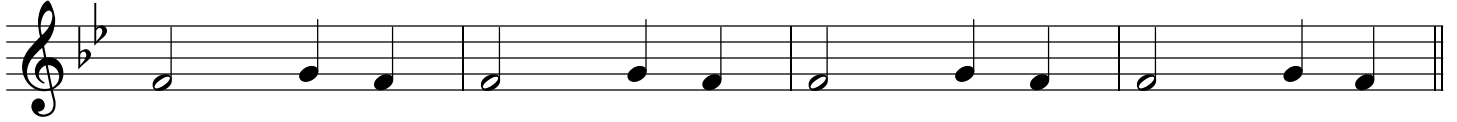
Cell 1



Cell 2



Cell 3



Cell 4



Cell 5



Cell 6



Cell 7



Cell 8



Cell 9

Musical notation for Cell 9, featuring a treble clef and a key signature of two flats. The notation consists of four measures of eighth-note patterns, primarily moving in an ascending and then descending sequence.

Cell 10

Musical notation for Cell 10, featuring a treble clef and a key signature of two flats. The notation consists of four measures of sixteenth-note patterns, showing a more complex rhythmic texture.

Cell 11

Musical notation for Cell 11, featuring a treble clef and a key signature of two flats. The notation consists of four measures of quarter-note patterns, providing a simpler harmonic structure.

Cell 12

Musical notation for Cell 12, featuring a treble clef and a key signature of two flats. The notation consists of four measures of eighth-note patterns, with some notes followed by rests.

Cell 13

Musical notation for Cell 13, featuring a treble clef and a key signature of two flats. The notation consists of four measures of sixteenth-note patterns, with some notes followed by rests.

Cell 14

Musical notation for Cell 14, featuring a treble clef and a key signature of two flats. The notation consists of four measures of quarter-note patterns, with some notes followed by rests.

Cell 15

Musical notation for Cell 15, featuring a treble clef and a key signature of two flats. The notation consists of four measures of eighth-note patterns, showing a consistent rhythmic flow.

Cell 16

Musical notation for Cell 16, featuring a treble clef and a key signature of two flats. The notation consists of four measures of quarter-note patterns, with some notes followed by rests.