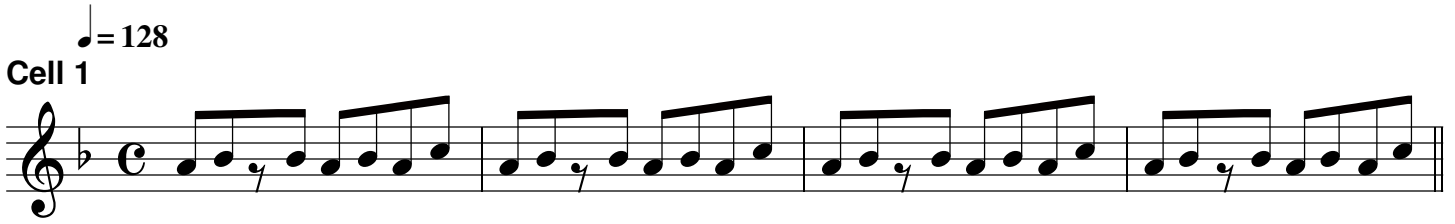


# TR2 December 8, 2017

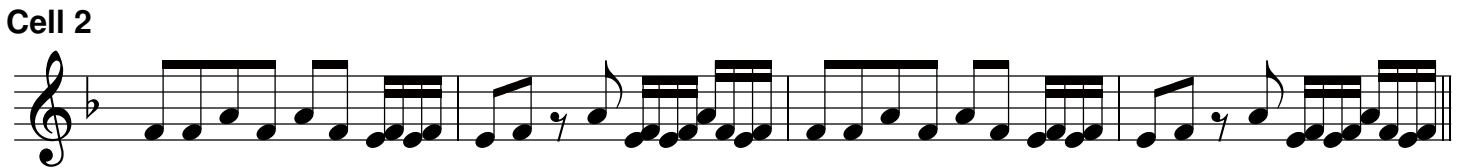
Create 24 Unique Cells - up to 4 bars in Length

Paul H. Muller

♩ = 128  
Cell 1



Cell 2



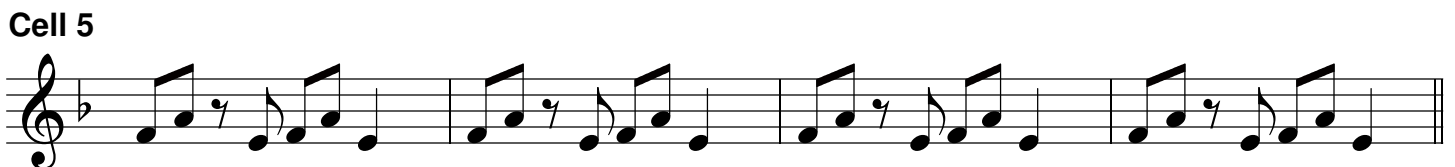
Cell 3



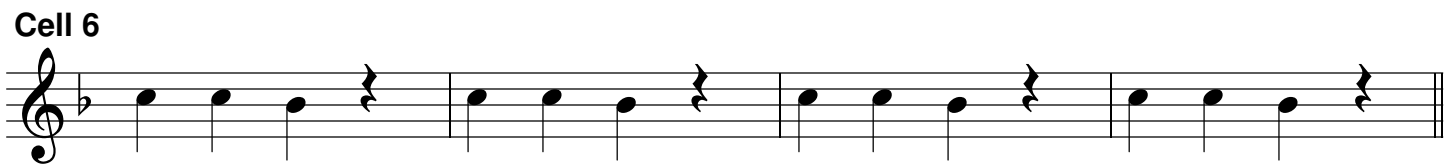
Cell 4



Cell 5



Cell 6



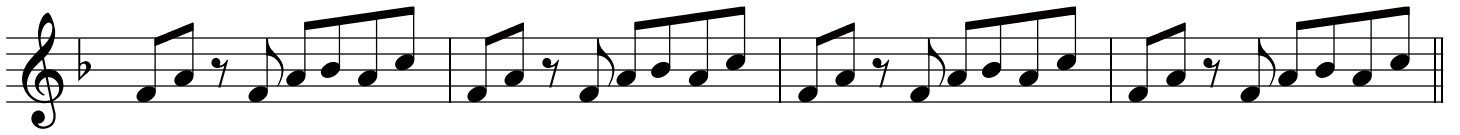
Cell 7



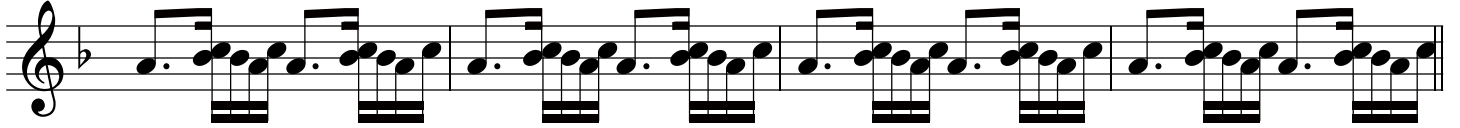
Cell 8



Cell 9



Cell 10



Cell 11



Cell 12



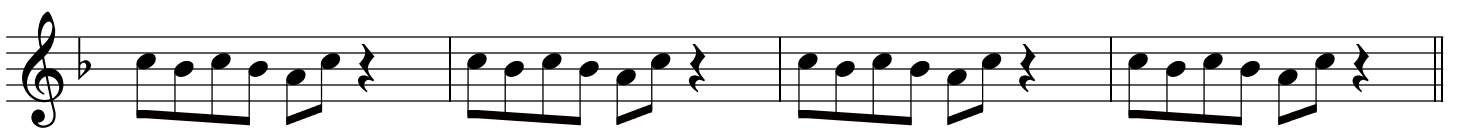
Cell 13



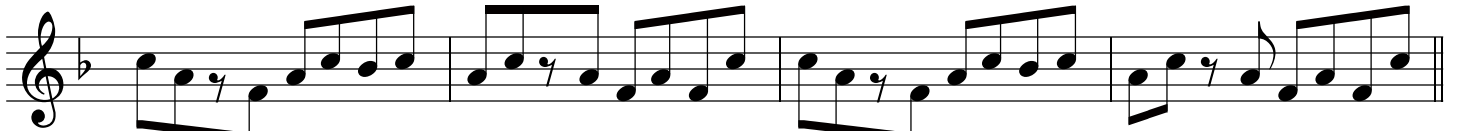
Cell 14



Cell 15



Cell 16

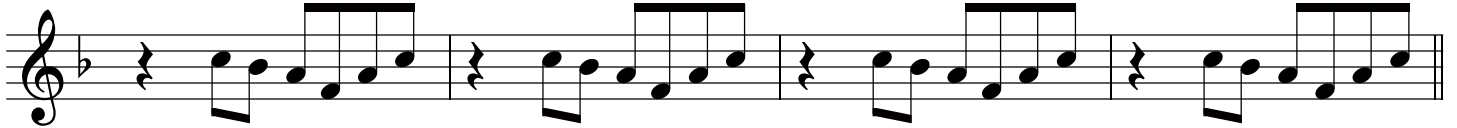


Cell 17



Musical notation for Cell 17, featuring a treble clef, a key signature of one flat (B-flat), and a 4/4 time signature. The notation consists of four measures, each containing a pair of eighth notes followed by a pair of sixteenth notes, with a quarter rest in the second half of each measure.

Cell 18



Musical notation for Cell 18, featuring a treble clef, a key signature of one flat (B-flat), and a 4/4 time signature. The notation consists of four measures, each starting with a quarter rest followed by a pair of eighth notes and a pair of sixteenth notes.

Cell 19



Musical notation for Cell 19, featuring a treble clef, a key signature of one flat (B-flat), and a 4/4 time signature. The notation consists of four measures, each containing a pair of eighth notes followed by a pair of sixteenth notes.

Cell 20



Musical notation for Cell 20, featuring a treble clef, a key signature of one flat (B-flat), and a 4/4 time signature. The notation consists of four measures, each containing a pair of eighth notes followed by a pair of sixteenth notes, with a quarter rest in the second half of each measure.

Cell 21



Musical notation for Cell 21, featuring a treble clef, a key signature of one flat (B-flat), and a 4/4 time signature. The notation consists of four measures, each containing a pair of eighth notes followed by a pair of sixteenth notes, with a quarter rest in the second half of each measure.

Cell 22



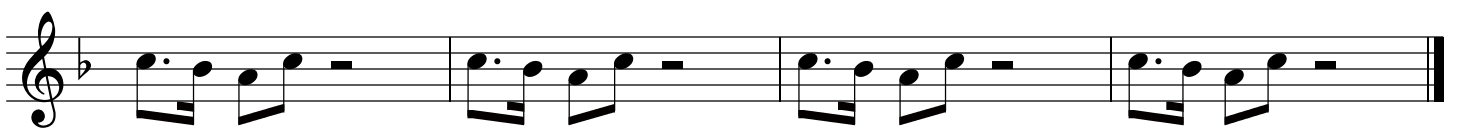
Musical notation for Cell 22, featuring a treble clef, a key signature of one flat (B-flat), and a 4/4 time signature. The notation consists of four measures, each containing a pair of eighth notes followed by a pair of sixteenth notes, with a quarter rest in the second half of each measure.

Cell 23



Musical notation for Cell 23, featuring a treble clef, a key signature of one flat (B-flat), and a 4/4 time signature. The notation consists of four measures, each containing a pair of eighth notes followed by a pair of sixteenth notes, with a quarter rest in the second half of each measure.

Cell 24



Musical notation for Cell 24, featuring a treble clef, a key signature of one flat (B-flat), and a 4/4 time signature. The notation consists of four measures, each containing a pair of eighth notes followed by a pair of sixteenth notes, with a quarter rest in the second half of each measure.