

# TR2 December 13, 2017

Create 24 Unique Cells - up to 4 bars in Length

Paul H. Muller

♩ = 120

Cell 1

Musical notation for Cell 1: A four-measure rhythmic cell in 4/4 time, featuring eighth notes and eighth rests.

Cell 2

Musical notation for Cell 2: A four-measure rhythmic cell in 4/4 time, featuring eighth notes and sixteenth notes.

Cell 3

Musical notation for Cell 3: A four-measure rhythmic cell in 4/4 time, featuring quarter notes and quarter rests.

Cell 4

Musical notation for Cell 4: A four-measure rhythmic cell in 4/4 time, featuring sixteenth notes.

Cell 5

Musical notation for Cell 5: A four-measure rhythmic cell in 4/4 time, featuring eighth notes and quarter notes.

Cell 6

Musical notation for Cell 6: A four-measure rhythmic cell in 4/4 time, featuring quarter notes and quarter rests.

Cell 7

Musical notation for Cell 7: A four-measure rhythmic cell in 4/4 time, featuring eighth notes and eighth rests.

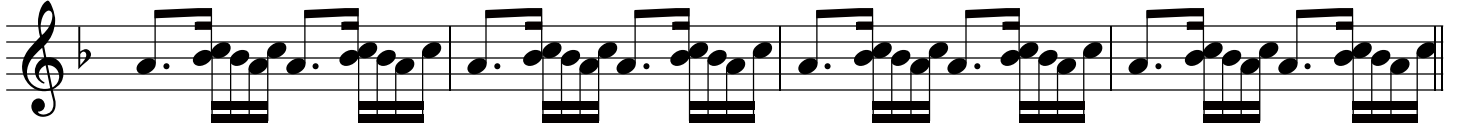
Cell 8

Musical notation for Cell 8: A four-measure rhythmic cell in 4/4 time, featuring sixteenth notes and eighth notes.

Cell 9



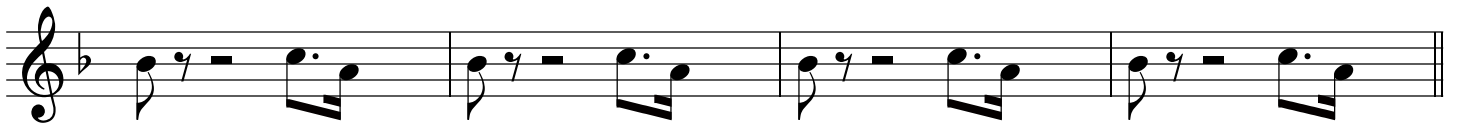
Cell 10



Cell 11



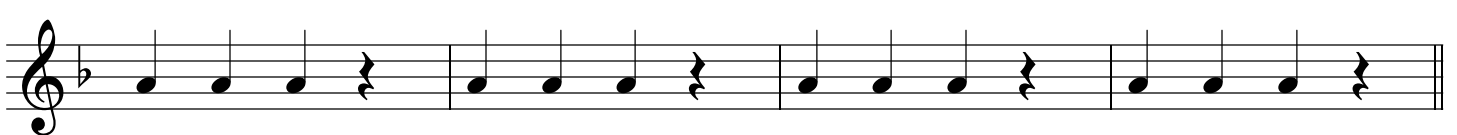
Cell 12



Cell 13



Cell 14



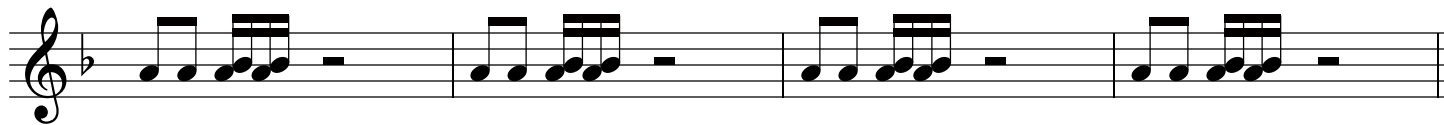
Cell 15



Cell 16

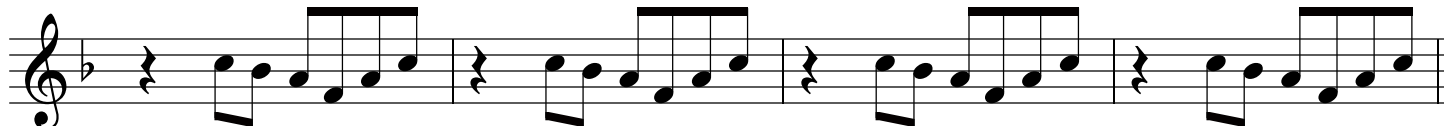


Cell 17



Musical notation for Cell 17, featuring a treble clef, a key signature of one flat (B-flat), and a 4/4 time signature. The notation consists of four measures, each containing a pair of eighth notes followed by a quarter rest.

Cell 18



Musical notation for Cell 18, featuring a treble clef, a key signature of one flat (B-flat), and a 4/4 time signature. The notation consists of four measures, each starting with a quarter rest followed by a pair of eighth notes and a quarter note.

Cell 19



Musical notation for Cell 19, featuring a treble clef, a key signature of one flat (B-flat), and a 4/4 time signature. The notation consists of four measures, each containing a quarter note followed by a pair of eighth notes.

Cell 20



Musical notation for Cell 20, featuring a treble clef, a key signature of one flat (B-flat), and a 4/4 time signature. The notation consists of four measures, each containing a pair of eighth notes followed by a quarter note with a grace note.

Cell 21



Musical notation for Cell 21, featuring a treble clef, a key signature of one flat (B-flat), and a 4/4 time signature. The notation consists of four measures, each containing a pair of eighth notes followed by a quarter note and a quarter rest.

Cell 22



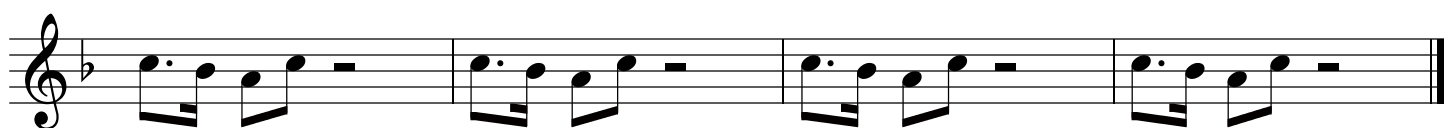
Musical notation for Cell 22, featuring a treble clef, a key signature of one flat (B-flat), and a 4/4 time signature. The notation consists of four measures, each containing a pair of eighth notes followed by a quarter note and a quarter rest.

Cell 23



Musical notation for Cell 23, featuring a treble clef, a key signature of one flat (B-flat), and a 4/4 time signature. The notation consists of four measures, each containing a pair of eighth notes followed by a quarter note with a grace note.

Cell 24



Musical notation for Cell 24, featuring a treble clef, a key signature of one flat (B-flat), and a 4/4 time signature. The notation consists of four measures, each containing a pair of eighth notes followed by a quarter rest.