

TR Cells 11-17-17

Create 24 Unique Cells - up to 4 bars in Length

Paul H. Muller

♩ = 128

Cell 1



Cell 2 *f*



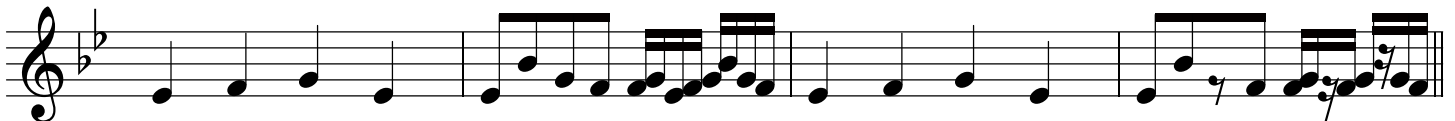
Cell 3



Cell 4



Cell 5



Cell 6



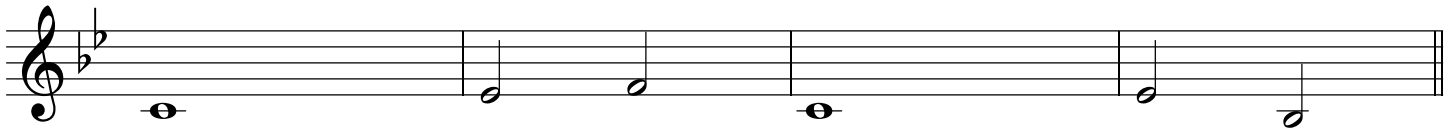
Cell 7



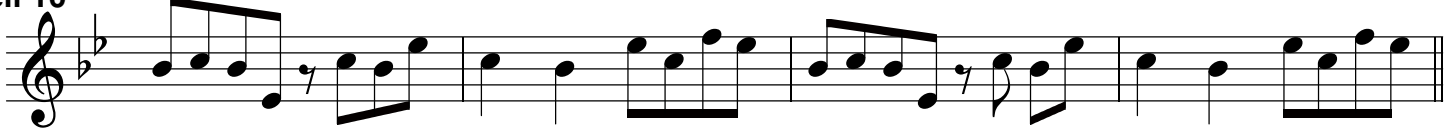
Cell 8



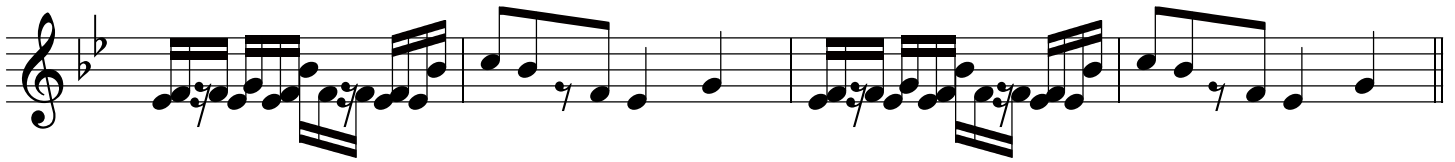
Cell 9



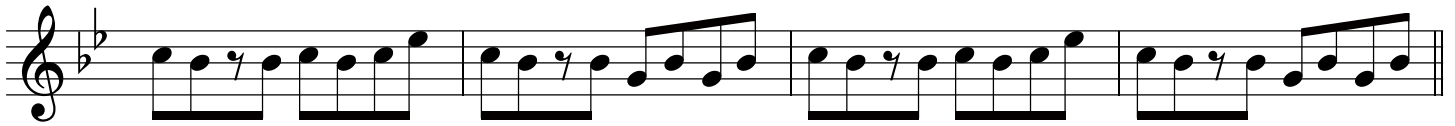
Cell 10



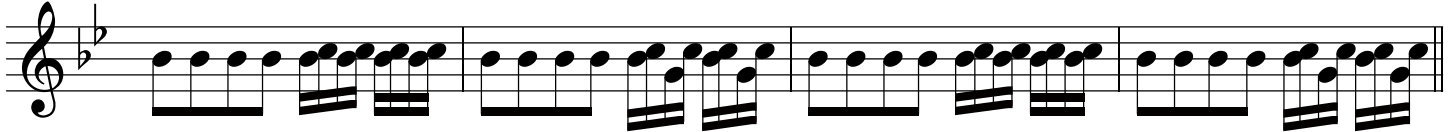
Cell 11



Cell 12



Cell 13



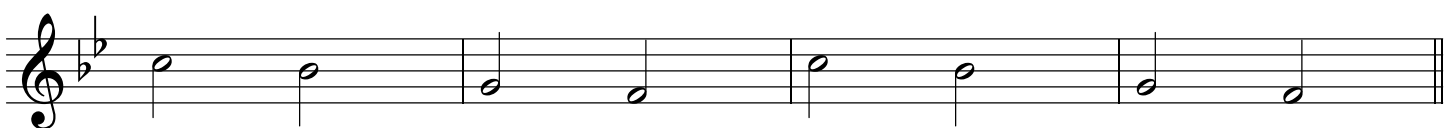
Cell 14



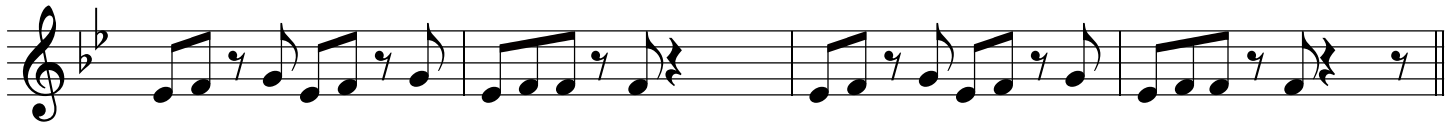
Cell 15



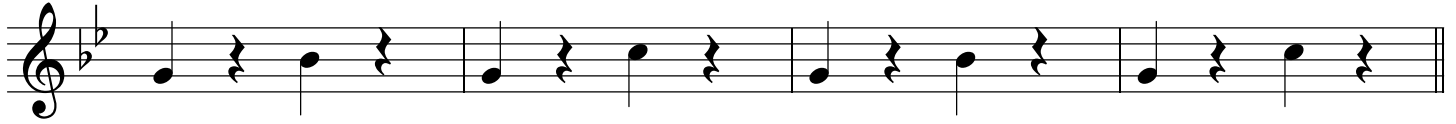
Cell 16



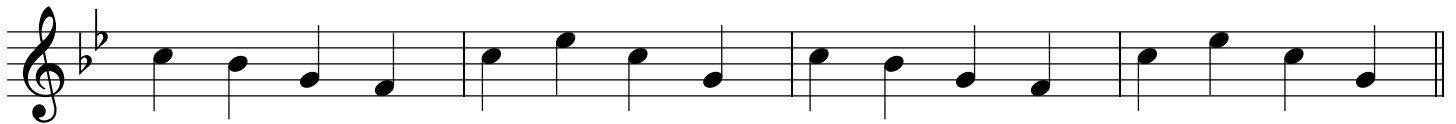
Cell 17



Cell 18



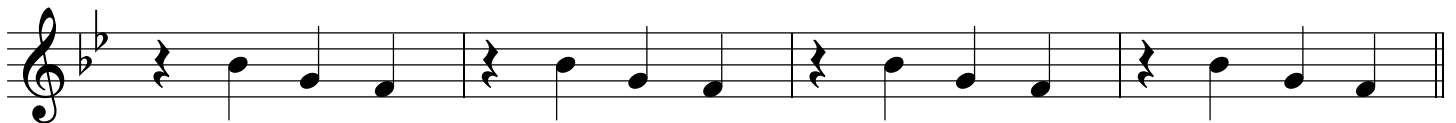
Cell 19



Cell 20



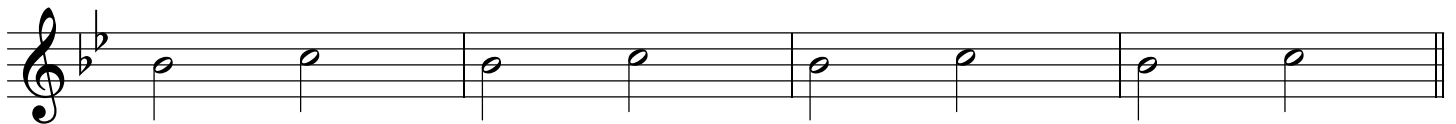
Cell 21



Cell 22



Cell 23



Cell 24

