

How to Post Your ImprovFriday Piece to the Event Thread From Your Member Page Player Using Internet Explorer

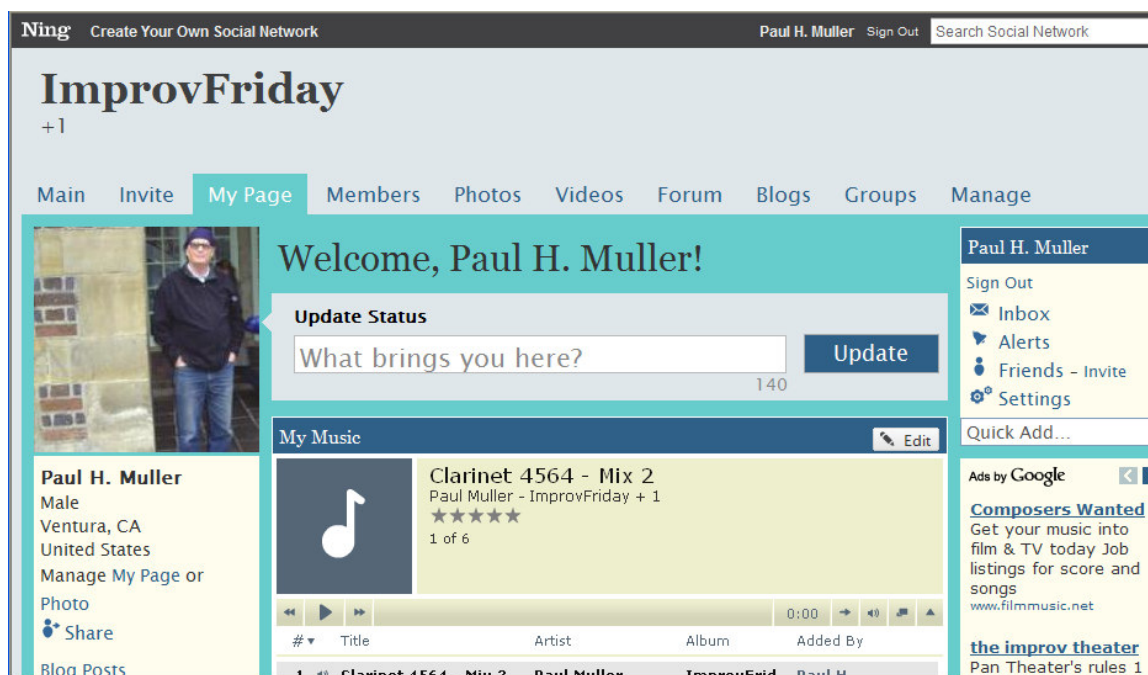
Introduction:

So you have a piece ready for ImprovFriday. Great! Now you need to post it to the Event Discussion thread so you can participate. The easiest way to upload an mp3 file to ImprovFriday is to use the Player located on your My Page profile.

Internet Explorer – the default browser if you are using Windows on your PC – unfortunately makes posting your piece to IF a bit trickier than it needs to be. Curse you Bill Gates! This paper describes a step-by-step method for posting your improv on the ImprovFriday Event discussion thread after you have loaded the piece to your My Page Player.

Background:

In order to participate in ImprovFriday, you have probably already signed up as a member on this site. When you become a member you automatically get a Profile Page and you can edit in a lot of information. You get to your profile by clicking on the *My Page* tab in the navigation bar along the top of each ImprovFriday page. My Profile Page looks like this:



The screenshot shows the Ning social network interface. At the top, it says "Ning Create Your Own Social Network" and "Paul H. Muller Sign Out Search Social Network". The main heading is "ImprovFriday +1". Below that is a navigation bar with tabs: "Main", "Invite", "My Page" (selected), "Members", "Photos", "Videos", "Forum", "Blogs", "Groups", and "Manage".

The profile section for Paul H. Muller includes a photo of him standing in front of a brick wall. To the right of the photo is a "Welcome, Paul H. Muller!" message. Below that is an "Update Status" section with a text input field containing "What brings you here?" and an "Update" button. To the right of the input field is a "140" character count.

Below the status update is a "My Music" section. It features a music player for "Clarinet 4564 - Mix 2" by Paul Muller - ImprovFriday + 1. The player shows a star rating of 5 stars (1 of 6) and a progress bar at 0:00. Below the player is a table with columns: "#", "Title", "Artist", "Album", and "Added By". The first row shows "1", "Clarinet 4564 - Mix 2", "Paul Muller", "ImprovFriday", and "Paul H.". To the right of the music player is an "Edit" button.

On the left side of the profile, there is a sidebar with the following information: "Paul H. Muller", "Male", "Ventura, CA", "United States", "Manage My Page or Photo", and "Share". Below this is a "Blog Posts" section.

On the right side of the profile, there is a sidebar with the following information: "Paul H. Muller", "Sign Out", "Inbox", "Alerts", "Friends - Invite", "Settings", "Quick Add...", "Ads by Google", "Composers Wanted" (with a link to www.filmmusic.net), and "the improv theater" (with a link to Pan Theater's rules 1).

You will notice I have the Player located in the center. You can do this too - simply drag the Player to the center of your page and drop it there. You can also customize your IF profile page in lots of other ways.

Here is a closer look at just the Player on my profile page:



My Music Edit

Clarinet 4564 - Mix 2
Paul Muller - ImprovFriday + 1
★★★★★
1 of 6

0:00

#	Title	Artist	Album	Added By
1	Clarinet 4564 - Mix 2	Paul Muller	ImprovFrid...	Paul H....
2	More in Four	Paul H. Muller	Best of...	Paul H. Muller
3	Postlude for Two Pianos	Paul H. Muller	Best of...	Paul H. Muller
4	Five Days Off	Paul H. Muller	Best of...	Paul H. Muller
5	Improv for 9/12/09	Paul H. Muller	Best of...	Paul H. Muller
6	Four Five Six	Paul H. Muller	Best of...	Paul H. Muller

[+ Add Music](#) Edit Playlist

You probably already know how to add music to your Player – you can see the *Add Music* button in the lower left of the Player. When you click on this you are given a series of screens that lets you upload mp3 files into the player from your PC. This is very straightforward.

You can see I already have 6 pieces in my Player that I have previously uploaded from my PC. In this example I will show how to link one of the pieces already in the player to the ImprovFriday Event Discussion thread.

ImprovFriday Event Discussion Thread

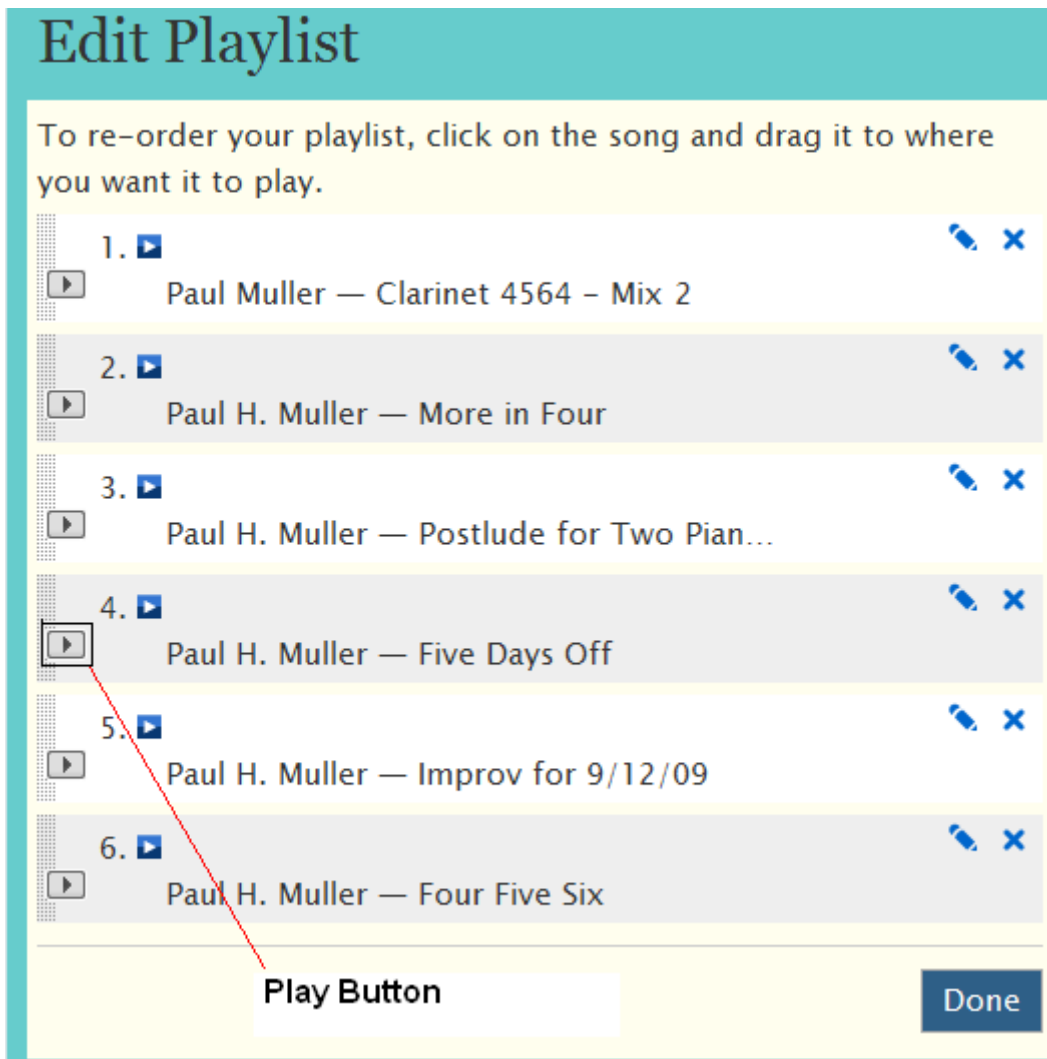
The weekly ImprovFriday event occurs as a discussion thread elsewhere on the ImprovFriday site. This is always easy to find – the current ImprovFriday event will be visible somewhere on the front page of the site – just follow the links. Discussion pages allow everyone to participate in the same place, and the Discussion thread that is the actual ImprovFriday event is where everyone will be looking for your piece.

So the trick is going to be how to link the URL address of your piece – now in the Player on your Profile Page – to the ImprovFriday Event Discussion thread. This process is not difficult, but there are some tricky parts because of the way Internet Explorer 7 handles links.

Using the Player Edit Mode

How do you get the URL of the piece that you uploaded to the Player on your Profile Page? The first step is to go into the player Edit mode.

You can see the *Edit Playlist* button in the lower right corner of the Player. Clicking on this brings you to a screen that looks like this:



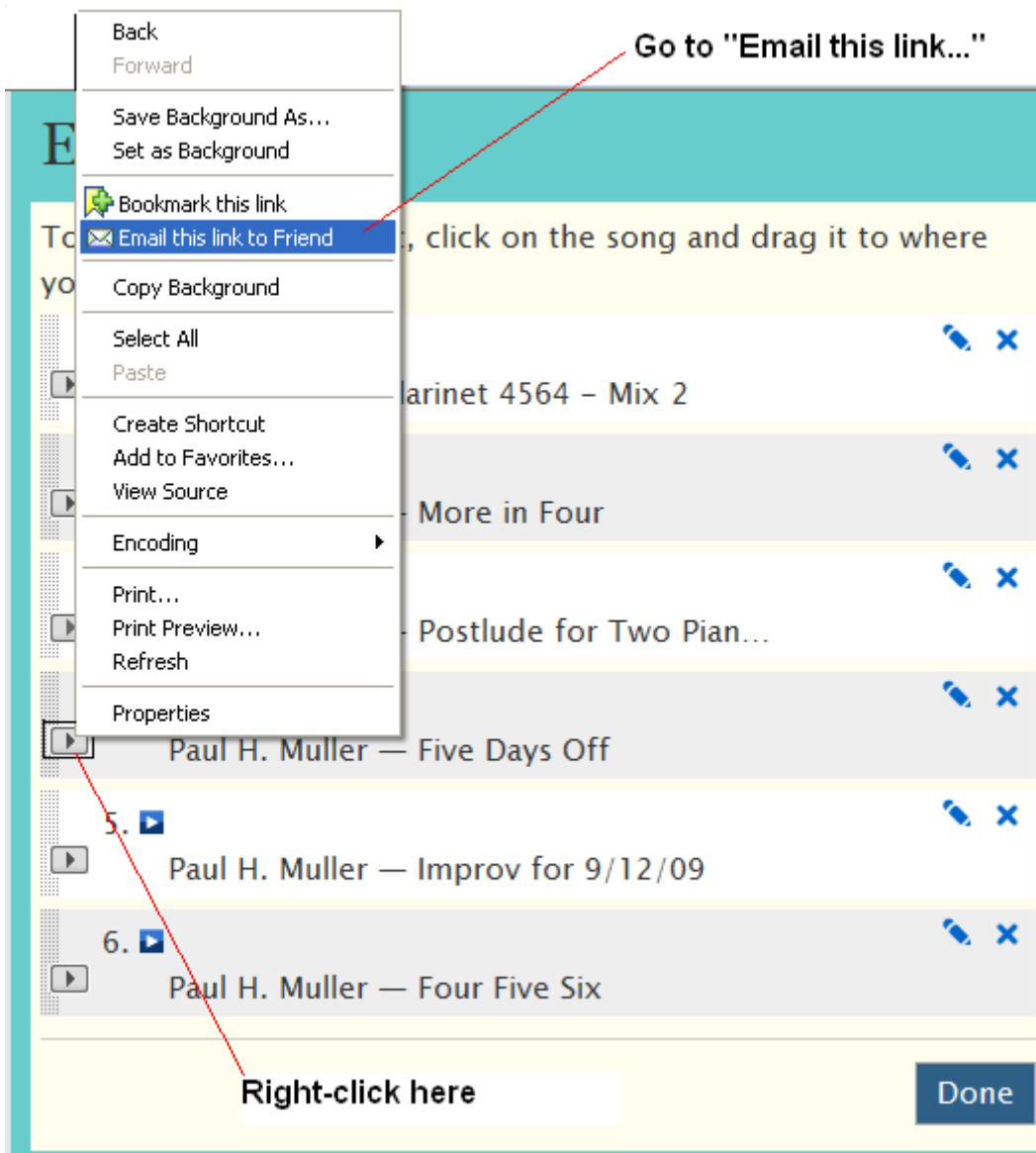
Notice there is a gray Play button to the left of each piece. I've identified this for one of my pieces in the screenshot above. You can click this and you will hear the piece.

So let's say I want to get the URL address of the piece "Five Days Off" – how do I do this?

Capturing the URL of a Piece

Internet Explorer, unfortunately, has no easy way to capture the URL of a piece in the Profile Page Player. But there is a tricky way to do this.

1. Put the mouse over the Play button of the piece you want select for the ImprovFriday event.
2. Right Click the mouse. You will see a pop-up menu like that shown below:

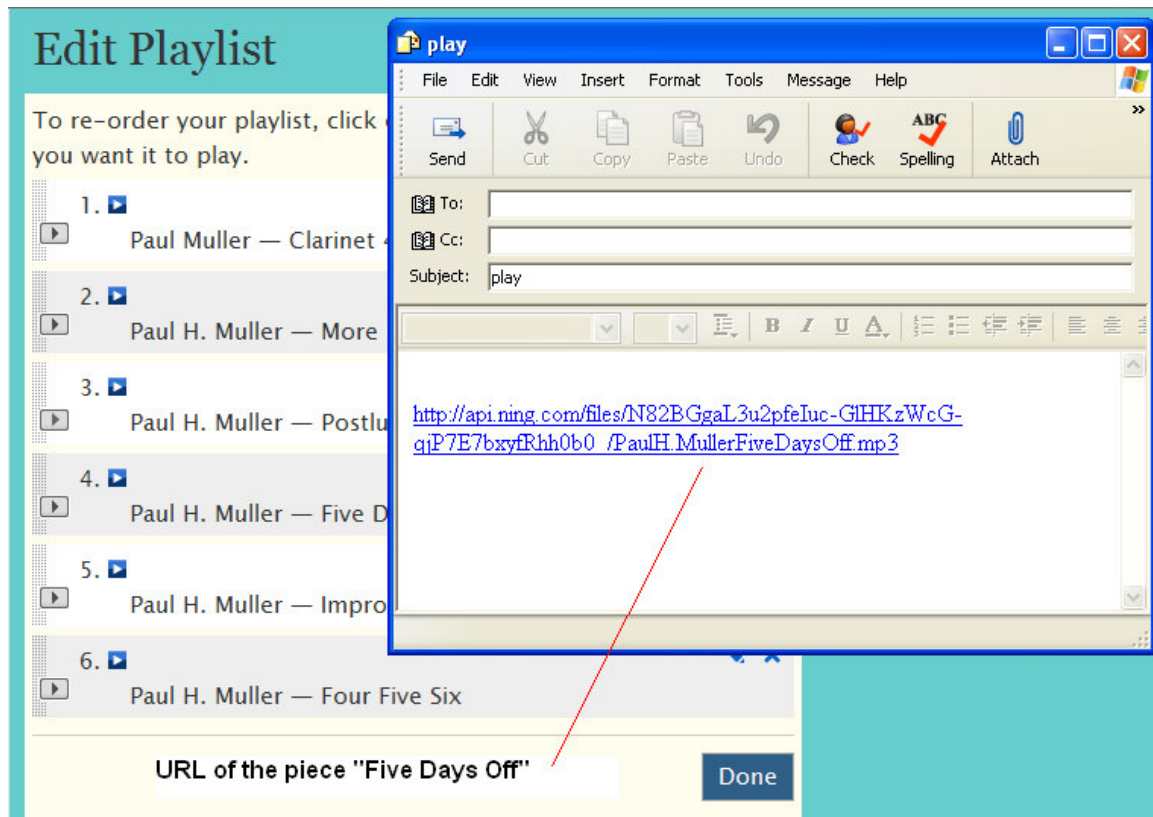


You will notice there is no way to simply capture the URL from the pop-up menu. Other browsers can do this and make the process of linking a piece from your Player much easier.

So we have to trick Internet Explorer into giving us the URL so we can copy and paste it into the ImprovFriday event discussion.

Using the Email Option to Copy the URL

Because Internet Explorer will not let us copy the URL of the piece in the Player directly, we will pretend we want to send an e-mail link to someone. So by choosing “Email this link to a Friend” from the pop-up, we get this:



On my PC the default mail client is Outlook Express – yours may be different. But in any case Internet Explorer will deposit the URL of the selected piece in the body of the email. You can see that the ImprovFriday site has added a lot of numbers and letters to the URL – but you know you have the right URL because it ends in *.mp3* Finally!

The important thing is that we now have the URL address of the selected piece in a place where we can copy it.

Now you highlight the URL in the email, right-click and select Copy. (You have probably done this a hundred times before.) Once you copied the URL you can close the Email window (or go ahead and send it somewhere.)

Now the URL of the piece has been copied to the PC clipboard, and we can paste this into the ImprovFriday Event Discussion so others can hear the piece!

Posting the URL into the ImprovFriday Event Discussion Thread

Now that we have the URL address of the piece copied, we can close down the Player edit mode. Simply click on the *Done* button in the lower right corner of the Player.

Next, exit your Profile Page and find the ImprovFriday Event Discussion thread. To post, simply click on the Reply to This link on the bottom of the Discussion page. A box will appear so you can enter your name, the title of the piece and any other information about the piece you want to include.

Here is an example for "Five Days Off":

The screenshot shows a forum reply interface. At the top, it says "Reply by J.C. Combs 13 hours ago" and "Send Message". Below that is a post by "Impetus by Mike Crain" with a "Reply to This" link. A "Reply to This" dropdown menu is open, showing a text input field with "ImprovFriday + 1 piece 'Five Days Off' by Paul Muller." and a "Five Days Off" link icon. A blue "Explorer User Prompt" dialog box is overlaid on the text input field, containing the text "Script Prompt: Please enter a website address" and a text box with the URL "http://api.ning.com/files/N82BGgaL3u2pfeluc-GIHKzWcG-qjP7E7bxyfRhh0b0_/PaulH.MullerFi". Below the dialog box is an "Add Reply" button. At the bottom, there are numbered tabs 1 through 6 and a "Follow- Email me when people reply" button.

1 Type in the title of the piece and highlight

2 Click on link icon (chain)

3 Backspace out "http://" then paste the link copied from the e-mail

4 Press "OK"

You can see the sequence. You enter the title, highlight it and then press the Link icon (looks like a chain) from the editing options above the box.

Note: A link box will appear with [http://](#) already inside. You must delete this because the link you copied already includes [http://](#). If you don't delete the default [http://](#) you will get an error message when someone tries to use the link!

When you press OK, you will see the link embedded in the edit box in HTML code. This will look like a lot of gibberish but you can probably see that it also contains the link. Press the *Add Reply* button and the link will appear in the title.

This is what you should see if everything worked correctly:

Reply by J.C. Combs 13 hours ago

Send Message

Awesome!!! Sorry for the confusion. [Impetus](#) by Mike Crain

Reply to This

Reply by Paul H. Muller just now

ImprovFriday + 1 piece 'Five Days Off' by Paul Muller.

Five Days Off

15 minutes left to edit your comment.

Reply to This

Now a link - click to listen to the piece. You did it!

Reply to This

1 2 3 4 5 6

Follow- Email me when people reply

Congratulations! You have posted the piece from your player correctly.

Keep posting each week and soon you will be able to go through the entire process from memory.

Thanks for participating in ImprovFriday + 1